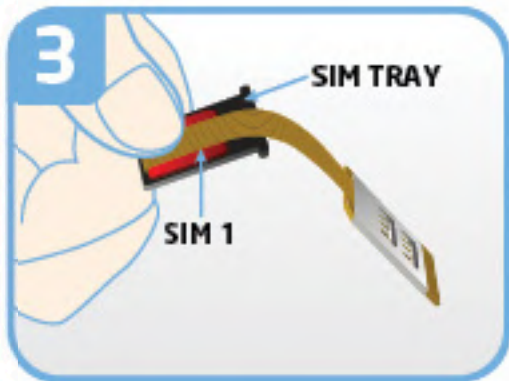
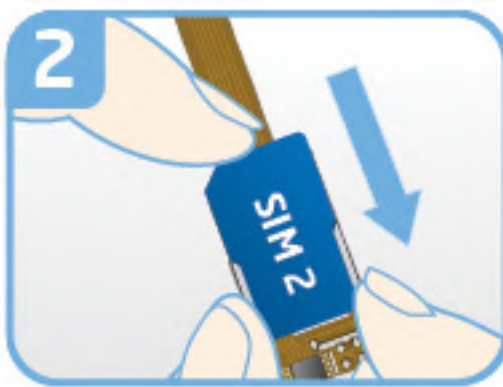
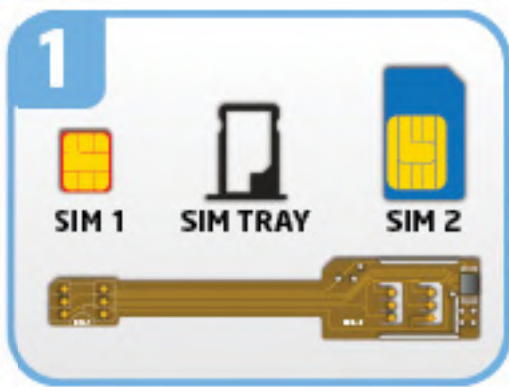


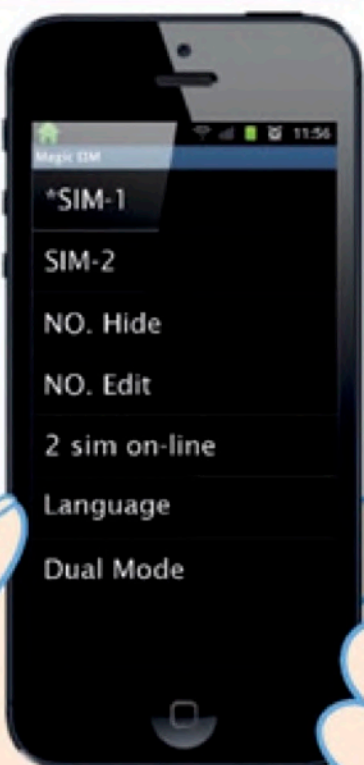
MAGICSIM ELITE IPHONE 8/ 8 PLUS / NANO

INSTALLATION GUIDE



- 1 Take the MAGICSIM adapter and your SIM cards.
- 2 Insert a standard sized SIM card into the SIM 2 position of the MAGICSIM adapter.
- 3 Insert a NANO SIM card into your phone's SIM tray on top of the SIM 1 position of the MAGICSIM adapter, then fold over the MAGICSIM adapter.
- 4a Insert the phone's SIM tray into the phone ensuring the SIM and adapter are sitting in the tray correctly.
- 4b
- 5 Fold the SIM 2 part of the MAGICSIM adapter around the back of the phone.
- 6 Place your protective case on to the phone to secure the MAGICSIM adapter.
- 7 SETUP> PHONE> SIM> APPLICATION on all iPhones.
- 8 The STK menu can be used to switch SIMS, select your Dual SIM mode, set your switching Autotimer, and manage all things Dual SIM-related on your phone.

STK MENU



SIM-1:

Selects SIM 1 as your active SIM.

SIM-2:

Selects SIM 2 as your active SIM.

Hide (not recommended):

Bypass your usual answerphone message so your inactive SIM greets all calls with: "the number you have dialed is not connected".

NO. Edit:

Renames SIM 1 and SIM 2 as numbers of your choice. Your phone will indicate which number is currently active on the home screen.

2 SIMs ON-LINE (autotimer):

Programs the adapter to autoswitch SIMs at a timed interval. Simply set the amount of time each SIM to be active: e.g. SIM 1 - 30, SIM 2 - 10 sets SIM 1 as active for 30 mins before swapping to SIM 2 for 10 mins. The minimum time we recommend settings each SIM for is 10 mins.

LANGUAGE:

Select the Dual SIM menu language. You can choose between English, German, Italian Spanish, Turkish and Russian.

DUAL MODE (007 mode):

In '007 mode' you can switch SIMs simply by dialing '001' (for SIM 1) or '002' (for SIM 2) on your phone. This option causes the STK menu to temporarily disappear - to retrieve the STK menu and exit '007 mode' dial '007' on your phone.