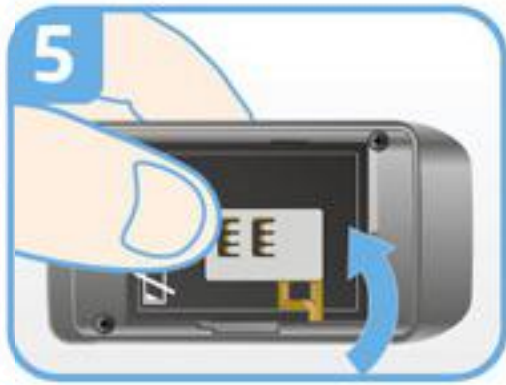
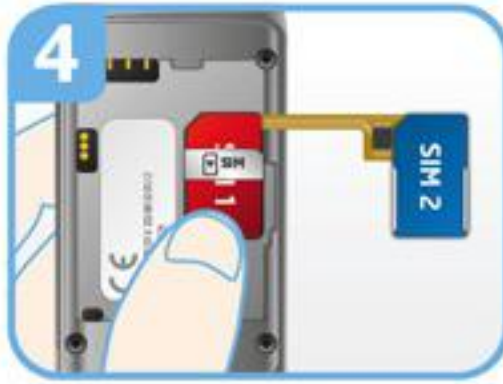
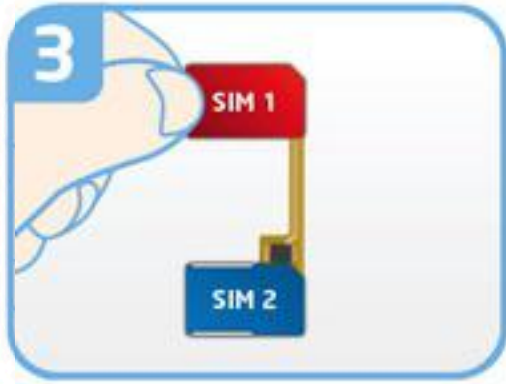
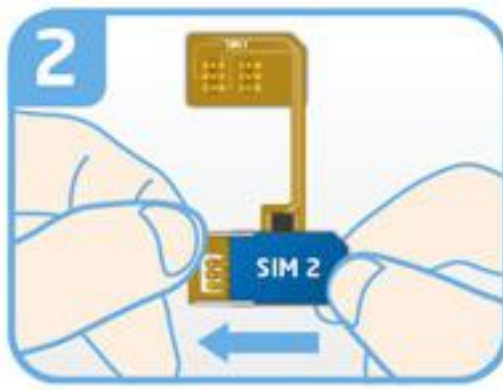
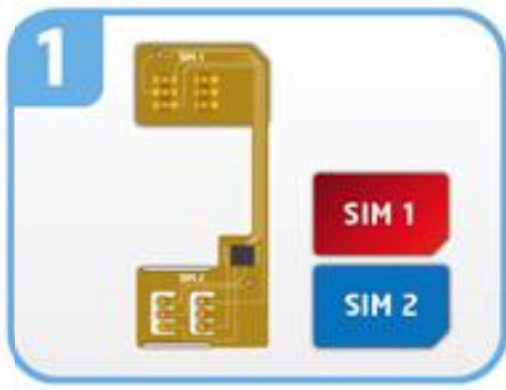


MAGICSIM ELITE NO CUT A - GALAXY S2

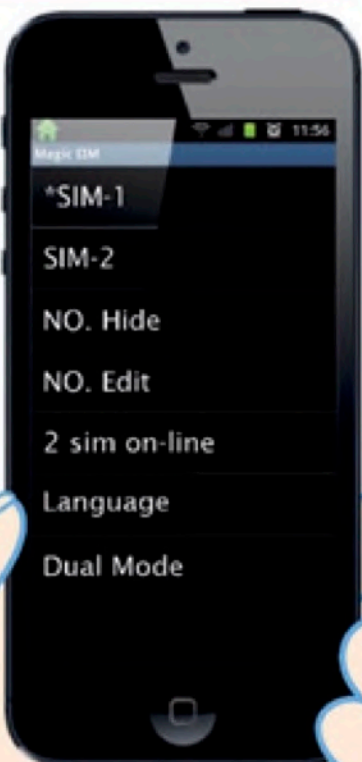
INSTALLATION GUIDE



- 1 Take the MAGICSIM adapter and your SIM cards.
- 2 Insert a standard sized SIM card into the SIM 2 position of the MAGICSIM adapter.
- 3 Place a standard size SIM card onto the SIM 1 section of the adapter.
- 4a Insert the SIM 1 section into the SIM slot in your phone.
- 4b
- 5 If needed fold over the SIM 2 section of the adapter to sit on top or underneath the battery, wherever is the most space available.
- 6 Make sure your battery is placed securely in the phone and replace your mobile phone's cover.
- 7
- 8 Turn your phone on and locate the STK-Menu (sometimes called DUAL-SIM or SIM TOOL KIT)/ This is located in the Apps folder in smartphones and usually in the "Networks" section of older phones.

The STK menu can be used to switch SIMS, select your Dual SIM mode, set your switching Autotimer, and manage all things Dual SIM-related on your phone.

STK MENU



SIM-1:

Selects SIM 1 as your active SIM.

SIM-2:

Selects SIM 2 as your active SIM.

NO. Hide (not recommended):

Bypass your usual answerphone message so your inactive SIM greets all calls with: "the number you have dialed is not connected".

NO. Edit:

Renames SIM 1 and SIM 2 as numbers of your choice. Your phone will indicate which number is currently active on the home screen.

2 SIMS ON-LINE (autotimer):

Programs the adapter to autoswitch SIMs at a timed interval. Simply set the amount of time each SIM to be active: e.g. SIM 1 - 30, SIM 2 - 10 sets SIM 1 as active for 30 mins before swapping to SIM 2 for 10 mins. The minimum time we recommend settings each SIM for is 10 mins.

LANGUAGE:

Selects the STK menu language. You can chose between English, German, Italian, Spanish, Turkish and Russian.

DUAL MODE (007 mode):

Selects '007 mode'. In '007 mode' you can switch SIMs simply by dialing '001' (for SIM 1) or '002' (for SIM 2) on your phone. This option causes the STK menu to temporarily disappear - te retrieve the STK menu ans exit '007 mode' dial '007' on your phone.